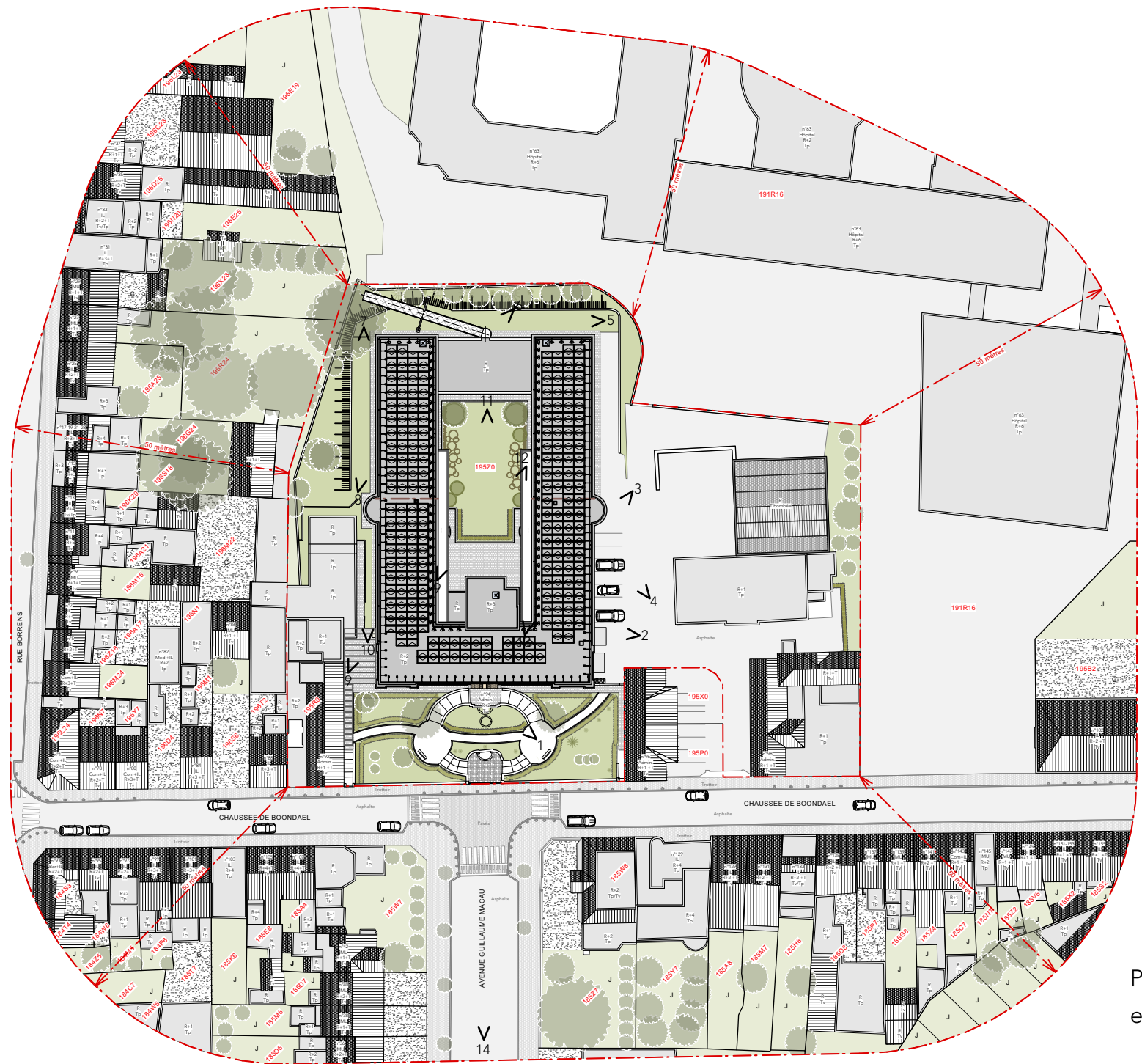


# DEMANDE DE PERMIS D'URBANISME

Situation de fait

Chaussée de Boondael 94, BAT.C - 1050 Ixelles  
Rénovation de l'enveloppe et amélioration des performances  
énergétiques du bâtiment C du CPAS d'IXELLES



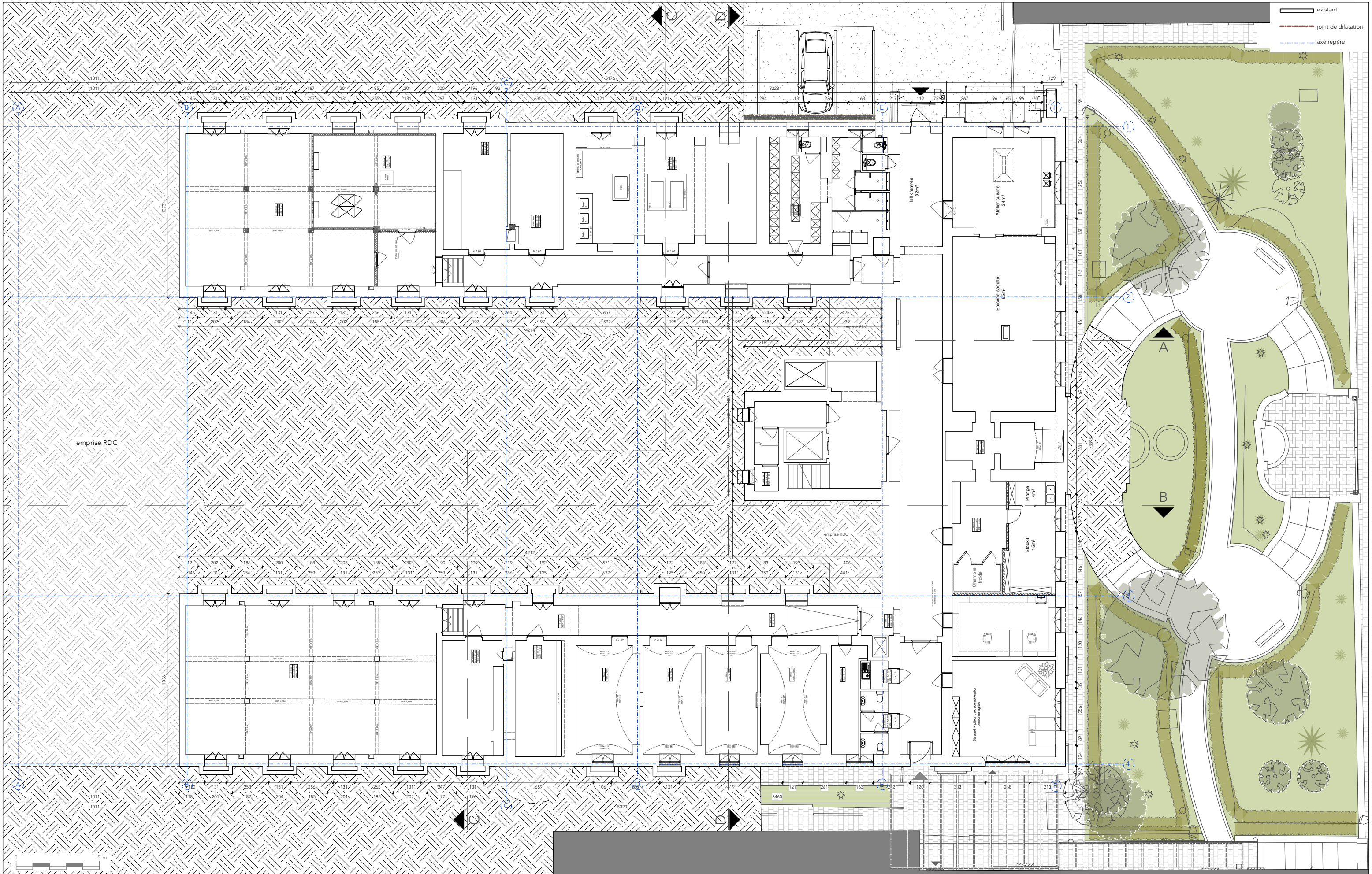
PLAN DE LOCALISATION  
ech : 1/5000

N

PLAN D'IMPLANTATION  
ech : 1/1000

N



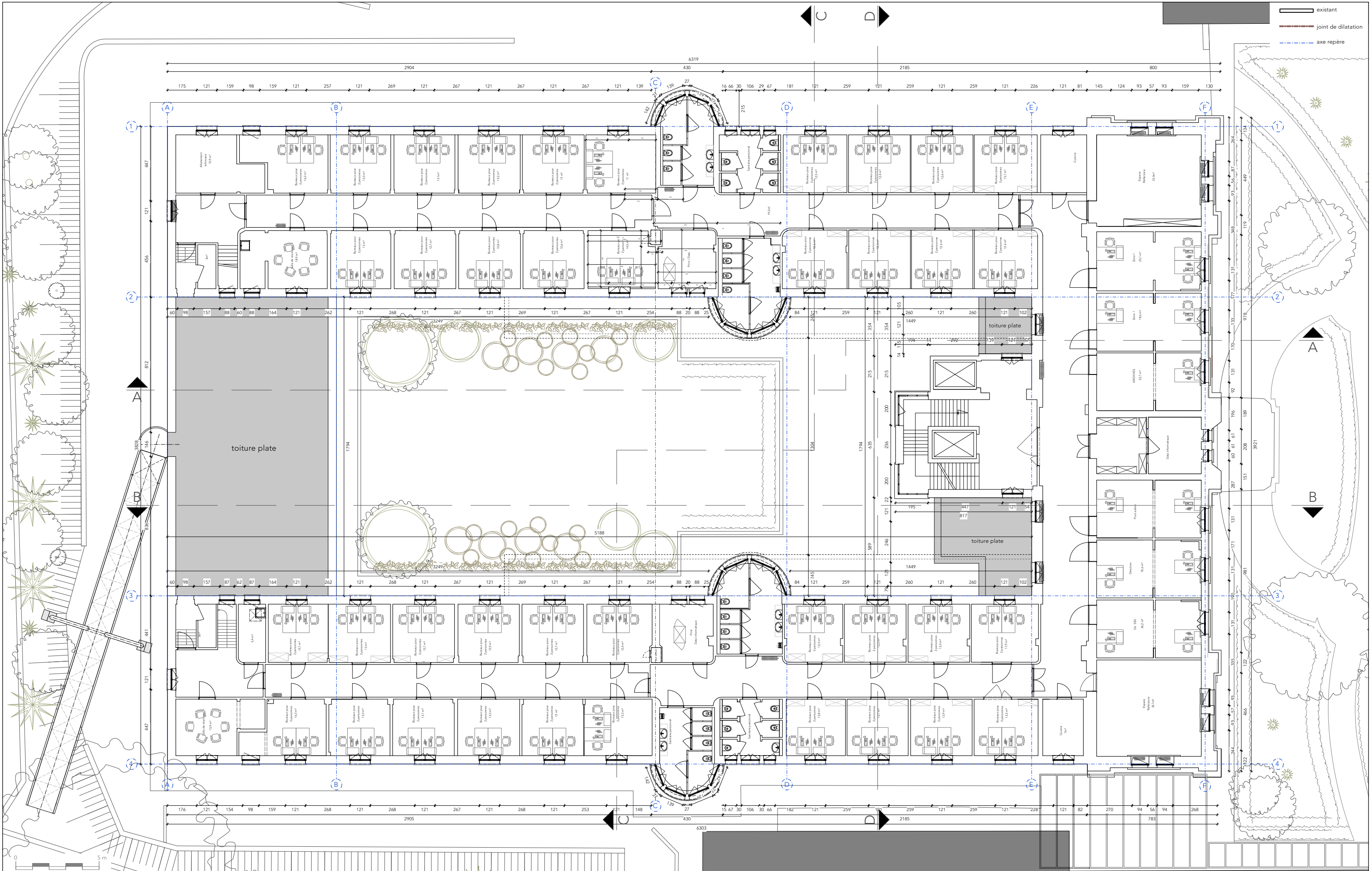






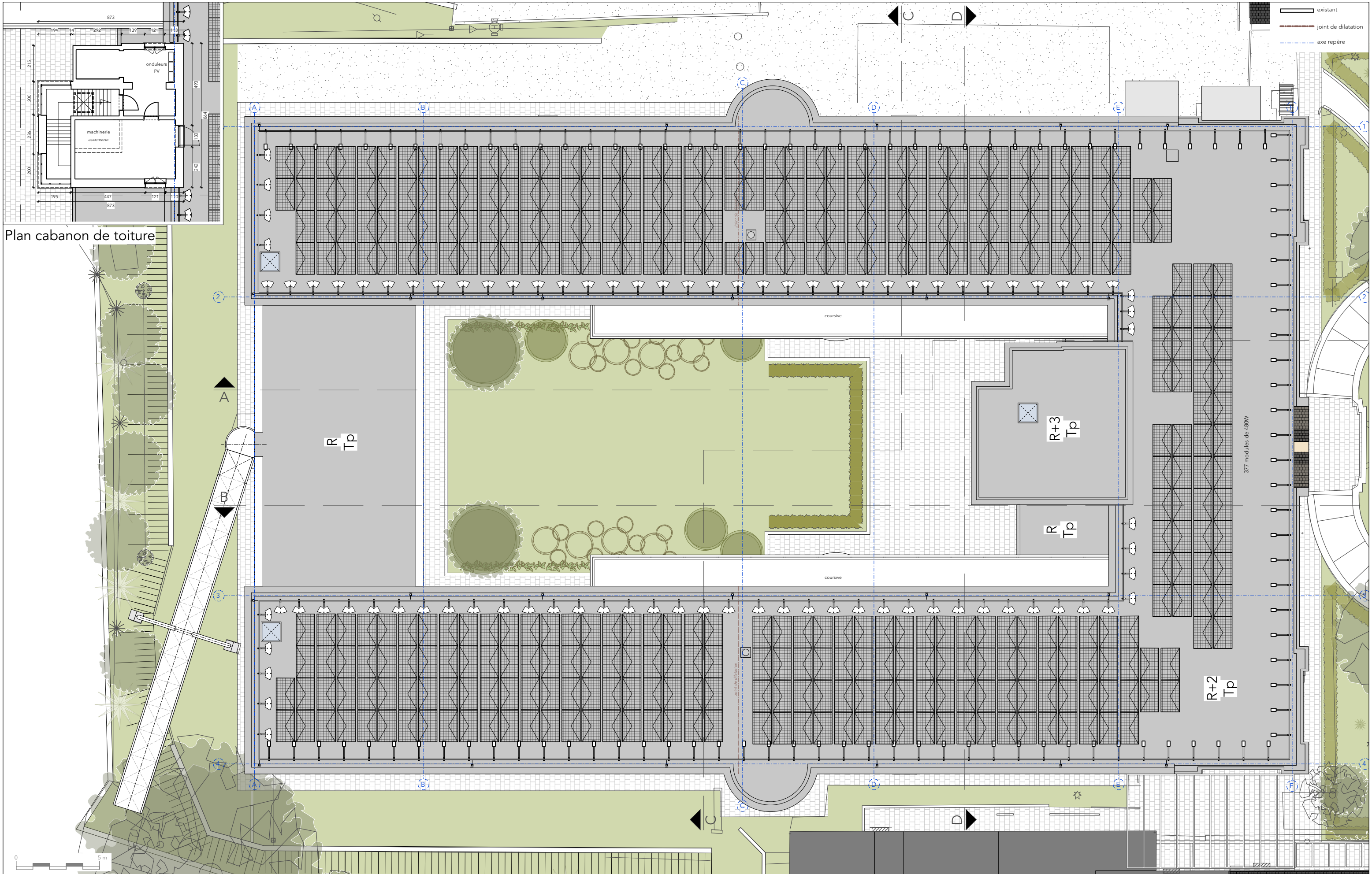












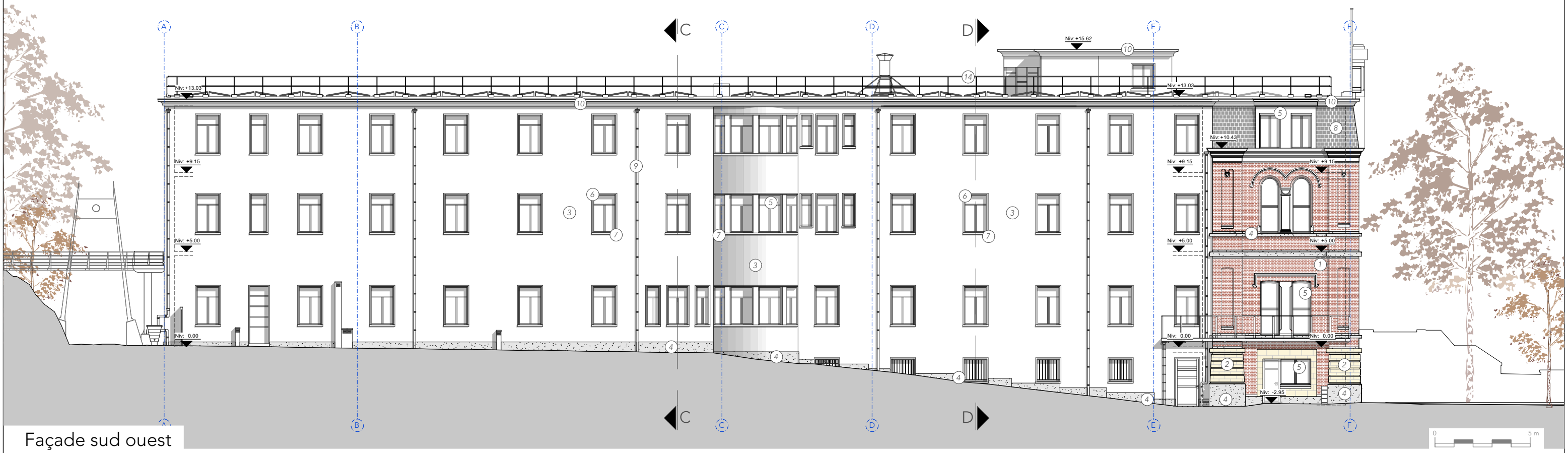
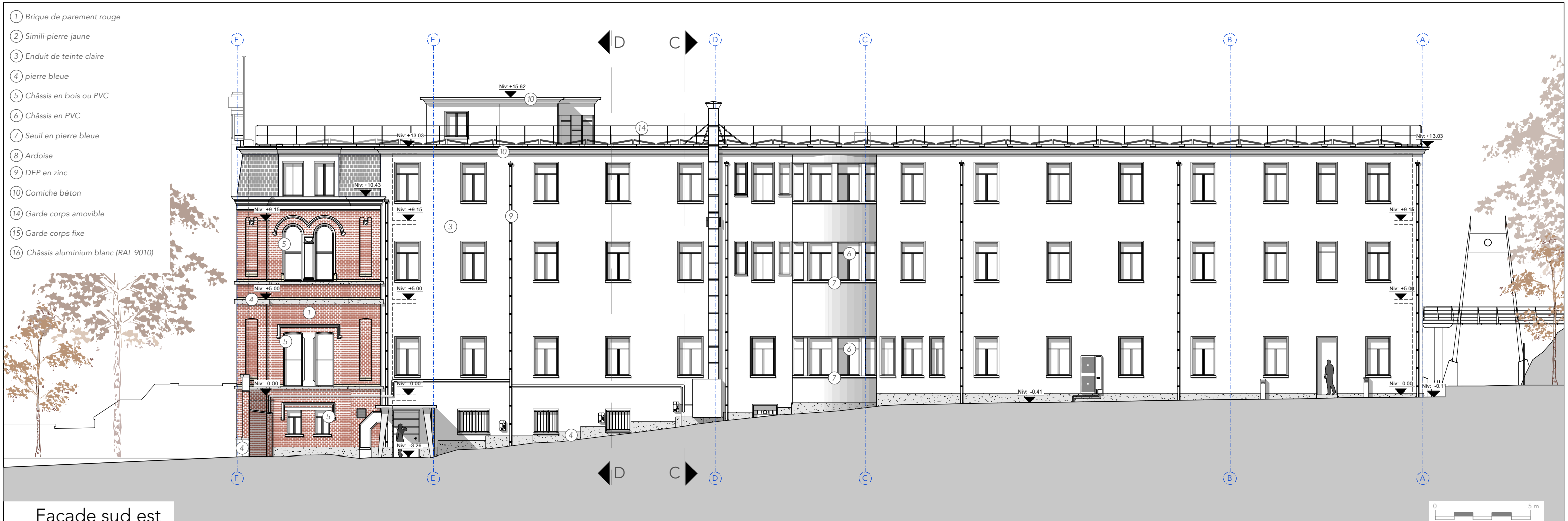
Plan cabanon de toiture



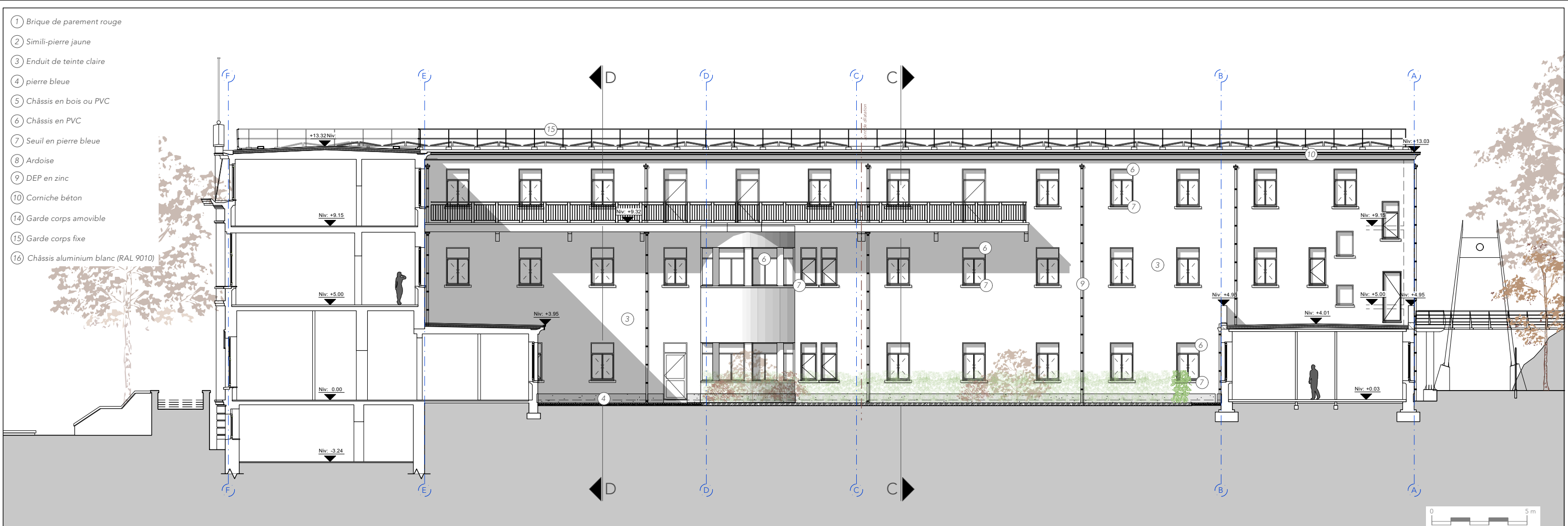
- 
- This architectural elevation drawing depicts a historic building facade, likely a town hall or municipal building, characterized by its red brick construction and central gabled entrance. The facade is symmetrical, with a central section featuring a prominent arched entrance and a small bell tower above it. The wings on either side are composed of red brick with arched windows and decorative elements. The drawing includes detailed level markers (Niv. +15.88, Niv. +14.72, Niv. +13.03, Niv. +9.15, Niv. +5.00, Niv. 0.00, Niv. -0.16) and section lines A-A and B-B. A scale bar at the bottom right indicates a length of 5 meters. The drawing is a technical representation of the building's exterior, showing the arrangement of windows, doors, and structural elements.

This architectural elevation drawing shows a building facade with several levels and annotations. The drawing includes a ground line and a roof line. The building has a central section with a taller part. The facade is divided into sections by vertical lines labeled 1, 2, 3, and 4. The drawing includes various level markers (Niv:) and annotations (10, 15, 16, 14, 13.03, 13.32, 9.15, 5.00, 0.00, 0.05, 4.95, 9.37, 15.57). The drawing also includes a scale bar (0 to 5 m) and a north arrow.

Façade nord est





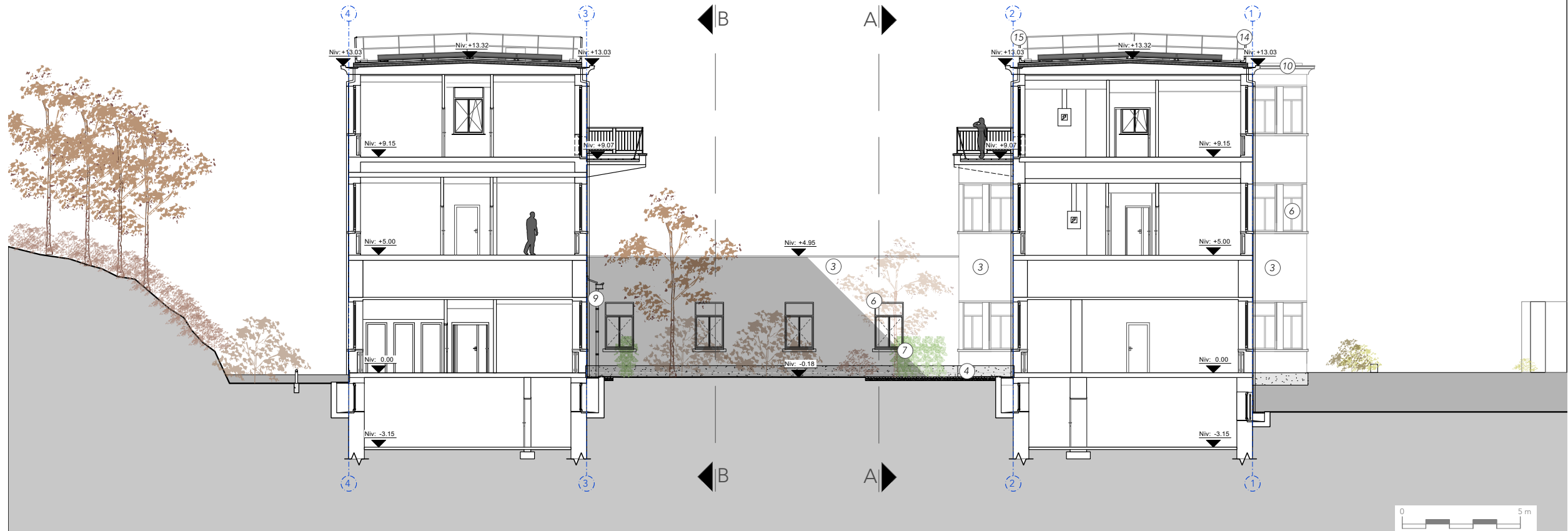


Coupe-façade sud est BB

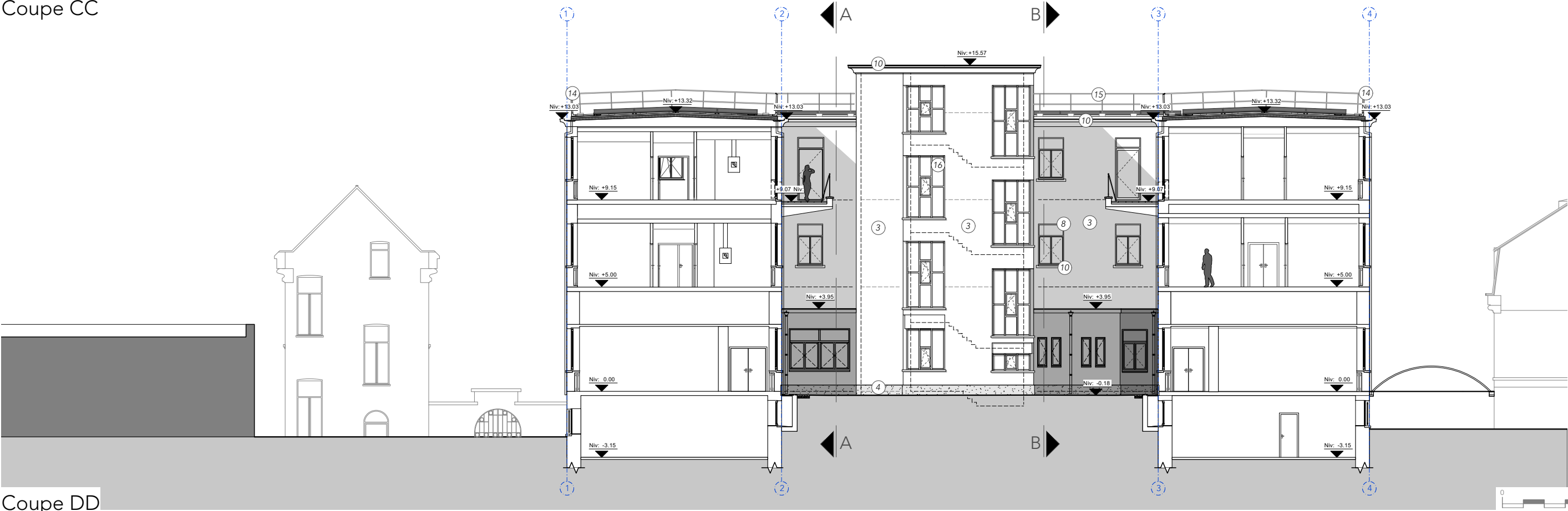


Coupe-façade sud ouest AA

- ① Brique de parement rouge
- ② Simili-pierre jaune
- ③ Enduit de teinte claire
- ④ pierre bleue
- ⑤ Châssis en bois ou PVC
- ⑥ Châssis en PVC
- ⑦ Seuil en pierre bleue
- ⑧ Ardoise
- ⑨ DEP en zinc
- ⑩ Corniche béton
- ⑭ Garde corps amovible
- ⑮ Garde corps fixe
- ⑯ Châssis aluminium blanc (RAL 9010)



Coupe CC



Coupe DD

<div>ACCARAIN BOUILLOT</div> <div>ARCHITECTES ASSOCIES</div> <div>Belgique - France - Luxembourg - RDC</div> <div>www.accarain-bouillot.com</div> <div>info@accarain-bouillot.com</div>	CPAS Ixelles - Chaussée de Boondael 94,1050 Ixelles		Maître d'ouvrage: CPAS d'Ixelles		Stabilité: DEXCO Antwerpsesteenweg 653, 9040 St-Amandsberg		Planche: Coupe CC Coupe DD		11
	DEMANDE DE PERMIS D'URBANISME - Situation de fait		Adresse: Chaussée de Boondael 92 1050 Ixelles		Techniques spéciales / PEB : WALK Rue des saules 8 - 1360 Thorembais-saint-Trond		Date	26.09.2025	
	Rénovation de l'enveloppe et amélioration des performances énergétiques du bâtiment C du CPAS d'IXELLES						Echelle	1/200	
							Indice	A	
AUCUNE REPRODUCTION NE PEUT ETRE FAITE SANS L'ACCORD DE L'ARCHITECTE									